

KINGS HISTORICAL SOCIETY

The Court Reporter

Fall 2016



Kings Arms Pub
By Lew Murphy's

390 Main Street. Kentville

5PM

Please reserve your place at
our Kings Historical Society

Christmas party

December 6th, 2015

Reserve with Kate

info@kingscountymuseum.ca

902-678-6237

Kings County Museum



Kings Historical Society Board of Directors 2016-2017

President - Maynard Stevens
Past President - Kelly Bourassa
Secretary - Jean Gibson Collins
Treasurer - Dave Ritcey
Curator - Bria Stokesbury
Office Manager -
Kate MacInnes Adams



The Kings County Museum

is

CLOSING

December 09, 2016

REOPENING

April 3, 2017



Miner's Marsh, located in downtown Kentville near the Cornwallis River, is a major part of the history of Kentville and Kings County. Before this land was known as Miner's Marsh, it was owned and used by the Miner family as pastureland. In 1994, Ducks Unlimited Canada acquired the property, and began a 16 year project to open a nature park.

Thanks to Ducks Unlimited Canada, the Town of Kentville, and many other sponsors Miner's Marsh officially reopened as a protected nature park in 2010. This exhibit explores Miner's Marsh both above and below the waterline and reveals the fascinating life that abounds there. After a visit to our exhibit you will see that there really is nothing minor at all about Miner's Marsh!

EXPLORING MINER'S MARSH



A MARSH FOR ALL SEASONS



EXHIBIT AT THE KINGS COUNTY MUSEUM FROM SEPTEMBER TO MID-DECEMBER

SOLDIER'S SOCIAL REVIEW

Justine MacDonald



Volunteer Garry Randall during a monologue



A couple of weeks ago, I had the pleasure of photographing Kings County Museum's Soldiers' Social, their main fundraiser of the year. They invited me just a few days before the event and already had their main photographer (Paul Illsley) lined up. That was perfect. I didn't have any pressure on me about making sure I got great photos of everything (note: I didn't say 'every photo was great'. That never happens!). I could take the photos that interested me, in the way I wanted to take them.

I walk past the Cornwallis Inn almost every day. Back in the day it was, obviously, an inn. Today it's comprised of businesses and apartments. I've always wondered what the apartments would be like. This was my first time ever being in the building. It looks amazing. I believe the current inn was built in the 30's and stepping through the doors was like stepping back through time. I wanted to photograph everything! And the event hadn't even started yet.

Organizers Kate, Bria, and their team did a great job setting up and decorating. The decor certainly meshed well with the building itself, the costumes, the music, to make us feel like we were truly at a war time social.


In addition to the attendees (sold out!) and volunteers, the museum had arranged for Dance Time, out of Port Williams, to get the crowd moving to the music of Rewind. It was great to see the costumed dancers, as well as regular attendees enjoying the night! Actors from Kentville's Centre Stage Theatre were on hand to present vignettes and monologues, sharing stories and histories from the local area.

Also, there was war cake, which I love, and other period treats. What more could you want? If they do this again next year, be sure to add it to your social calendar!

For more of Justine's photos of the event and other interesting stuff, check out her blog:

<http://aurora-lee.ca/blog/kings-county-museums-2soldiers-social/>





A HUGE THANK YOU TO OUR SOLDIER'S SOCIAL VOLUNTEERS

" INN EMPLOYEES" BELL BOY- BRIAN ADAMS . CIGARETTE GIRLS
- MINDY VINQUIST-TYMCHUK . JOEANNE DOBBELSTYNE . TANYA
BOSWORTH . COAT CHECK GARY HILLIER . 1944 KENTVILLE
MAYOR MAYNARD STEVENS . PIPER- ED COLEMAN . TICKETS
LANA CHURCHILL PHYSICAL SET UP-BILL NAYLOR . RICK
GILBERT. JOANNE BEZANSON . GEORGE HENRY .
PHOTOGRAPHERS-PAUL ILLSLEY . JUSTINE MACDONALD .
REWIND BAND- BARBARA RILEY . PETER CONROY . DUANE
OLSON . WAYNE MACDONALD . EARLE ILLSLEY . GARRY
LEESON . NANCIE ARMSTRONG . SOLOIST-SALLY WILKIE .
BANJO PLAYER-ALLAN WILKIE . COSTUMES LANA CHURCHILL .
CENTRESTAGE ACTORS- DARRYL DOUCETTE . BETH BREW-
STER .MIKE BUTLER . CHERIE ZINCK . STAGE MANAGER- JEAN
KELLY . WEST NOVAS ACTOR GARY RANDALL . DANCETIME IN
PORT WILLIAMS DANCERS MARION SCHLAICH . MICHAEL LOWE .
HOLLY & JAMES MORRISON . JANICE & KEITH MOORES . KARA
& RODNEY MORRISON . IRENE CHRISTIE & BRAM DE GUES .
DIANA & ADRIAN WALSH . CORA & GUY BRETON . KELLY AND
ALAN MILLER . DEBBIE & GARY HUNTLEY . YVETTE LEBLANC &
FRANK TWOHIG . LORI & PAT LOUGHNANE . JANE & RON
DOWNIE . NANCY MORSE & ROBERT BURKE . ANDRA COLE &
GARY KNOWLES . BAKERS & FOOD PLATERS- ELVA KELLEY .
NANCY ARMSTRONG . MARY STEVENS . CLARA REDDEN . LIZ
STOKESBURY . JEANNIE GIBSON-COLLINS . HELEN HANSFORD .
DORIS ILLSLEY . LANA CHURCHILL . ELVA KELLEY . ALBERTA
BISHOP . NANCY HENRY . JUDY PARKS . GLENDA BISHOP .
DECORATING JOANNE BEZANSON . NANCY HENRY . GEORGE
HENRY . DORIS ILLSLEY . BERNICE NAYLOR . MARY SPONAGLE
COFFEE & PUNCH- DORIS ILLSEY . LIZ STOKEBURY.

MANY , MANY THANKS FROM

KATE MACINNES ADAMS AND BRIA STOKESBURY

FOR

THE KINGS HISTORICAL SOCIETY

A HUGE THANK YOU TO
OUR SOLDIER'S SOCIAL
SUPPORTERS FOR
GIFTS IN KIND



HALF ACRE CAFE
NEW MINAS SUPERSTORE
KEN BEZANSON
JOANNE & RON
BEZANSON
BETH IRVINE
GLENDA BISHOP
IRENE ARMSTRONG
BRIA STOKESBURY
KATE MACINNES ADAMS
NANCY HENRY
AND OUR FINANCIAL
SPONSORS



MAYNARD AND MARY STEVENS
SNAP YOUR CAP !

SAFEGUARD PROPERTY
MANAGEMENT & SERVICES
AND

HARBOUR EDGE MORTGAGE
INVESTMENT CORPORATION

SNAP YOUR CAP! (IN KIND)

KENTVILLE TOYOTA

WHAT'S BUZZIN' COUSINS!

DAVE AND MELISSA RITCEY

DUCKY SHINCRACKERS !



EXHIBIT CLOSES NOVEMBER 17, 2016

Members of the West Nova Scotia Regimental Association have partnered with the Kings County Museum to showcase a specialized exhibit, “**Sightings: Exploring the Scope of the Canadian Sniper in World War Two.**” The exhibit opened April 18, and runs through November 17, focusing on the history of WNSR snipers. It includes artefacts and personal stories.



The West Nova Scout-Sniper Platoon

From an article on the WNSR Regimental Association website by
Honorary Colonel John Leefe.



Italy 1944: the Allies had successfully driven Italian and German forces out of Sicily and invaded the Italian mainland. The First Canadian Division was now part of the British 8th Army. In the vanguard was the 3rd Canadian Infantry Brigade, comprised of R22eR (Vingt-Deuxs) from Quebec, the Carleton and York Regiment from New Brunswick and the West Nova Scotia Regiment. Before their job was done in Italy and Northwest Europe, all would be in the thick of fighting for 22 months. Up to Christmas 1943, the war in Italy had been one of movement. After the brutal battle for Ortona, it took on a more static complexion, with the German lines well established, formidably armed and manned by hard bitten and superbly trained troops. In March 1944, Lt. Col. Ronald Waterman of the WNSR decided static warfare offered an opportunity to harass the enemy more vigorously. He instructed Captain Don Rice to scrutinize every platoon in the West Novas and select the ones he felt were best qualified to populate a stand alone scout sniper

platoon. For two weeks, about 40 West Novas trained, learning how to shoot with telescopes and trench periscopes, map and aerial photo reading and interpretation, compass reading, field sketching, judging distances, stealth techniques, use of a knife and, of course, camouflage techniques. After this intensive training phase, 23 of over 40 potential candidates were selected. The Scout-Sniper Platoon was responsible for all reconnaissance patrolling of enemy lines. Rice would muster his specialists and then go over detailed planning for their outing. In later years, Oren Foster reflected, “Our job was to go into No Man’s Land at night and capture prisoners for interrogation. A very risky business. Throughout the war fear was our constant companion.” Any number of tasks could be performed, including shooting up enemy outposts, blowing up mines, capturing prisoners for interrogation, drawing fire to determine enemy strong points and generally gathering as much intelligence about the enemy as possible.





The West Nova Scout-Sniper Platoon S

Throughout the war fear was our constant companion.” Any number of tasks could be performed, including shooting up enemy outposts, blowing up mines, capturing prisoners for interrogation, drawing fire to determine enemy strong points and generally gathering as much intelligence about the enemy as possible. Much of this patrolling was done under cover of darkness. It was a lonely, dangerous task that was hated by most of the men assigned to it, but they performed it like the professionals they had become. The intelligence they gathered saved lives. The Scout-Sniper Platoon was also responsible for maintaining forward Observation Posts (OP) 24 hours a day. My uncle, John, who served with the Royal Canadian Artillery in Italy and was a post-war commanding officer of the WNSR, was often detailed to such duties. He said the loneliness was

daunting. Foster used his talents to good effect to locate a German sniper. The West Novas were being heavily mortared, with obvious accuracy. Carefully scrutinizing the landscape, Foster thought he saw a slight movement in a haystack some distance away. Displaying his usual stealth, he worked his way up to it and captured an enemy sniper, who had also been acting as a forward observer. The shelling stopped almost immediately, and Foster returned to his lines with the German sniper in tow, complete with wireless set. The WNSR Scout-Sniper Platoon proved very effective, comprised of men who were excellent shots and skilled stalkers. Most, if not all, came from rural communities, where they had hunted from the time they were young. The West Nova Scout-Sniper Platoon Submitted were youngsters. Through special skills, determination, self-discipline, cunning and intelligence, the men accepted an extraordinary wartime role. Their efforts saved the lives of comrades-in-arms.



In Memoriam:



Since the publication of our last newsletter we have lost two individuals who were long standing members and at one time very active volunteers with the Kings Historical Society. On behalf of the membership of the Society condolences are extended to the families of:

- Weldon “Bud” Atkinson (passed away on October 5, 2016)
- Pauline WorthyLake (passed away on October 9, 2016)



Weldon, or “Bud” to most of us, served as the President of the Society in 1989 and 1990. He was actively involved with the Society sharing a keen interest in genealogy and local history until he moved to Lockeport in the late 1990’s. For his infectious laugh, his willingness to pitch in and do all kinds of work, and his endearing interest in the success of the society and the museum he will be fondly remembered.

Pauline WorthyLake graced events at the Kings County Museum for many years serving with the Refreshment Committee and delighting all with her lovely British accent and charming way. Following the passing of her husband Grant she remained a supporter of the Society and although she had not been active in recent years she was missed, and like Bud ,will be very fondly remembered by all.

KINGS HISTORICAL SOCIETY'S UPCOMING EVENTS

KINGS COUNTY MUSEUM



TEA

37 CORNWALLIS
STREET
KENTVILLE

TEA
SWEETS
SCONES

A Woodsy Wonderland

SATURDAY

DECEMBER 3RD, 2016

2-3:30PM

BAKE TABLE




Visit our Victorian Parlour decked out in its Christmas Finery

And our exhibit "A Marsh for all Seasons"



Kings Historical Society

KHS Monthly Meeting
Neolithic Orkney:
the Ness of Brodgar
and Beyond 
With David MacInnes

Kings County Museum
Courtroom (upstairs)
37 Cornwallis Street
Kentville

Free will
donations
appreciated



Tuesday


November 29, 2016

7.30 PM

902-678-6237

www.kingscountymuseum.ca

The Neolithic
4000-1800BC

Centuries before the Pyramids and before Stonehenge there was a monumental complex of prehistoric sites in the Orkney Isles off the northern coast of Scotland. Archaeological discoveries made here, including the Ness of Brodgar, are challenging our understanding of the spread of Neolithic Culture. Join David MacInnes as he explores these discoveries and how they are causing experts to question the European prehistoric model of civilization. 

November 29th, 7:30pm

David MacInnes will be giving a talk on Neolithic Orkney. David spent six months (Jan 2016-July 2016) doing post graduate work at the University of the Highlands and Islands Archaeology Institute in Scotland. He had the opportunity to join with other research post-graduate students at the Ness of Brodgar excavations. David's November talk promises to be an excellent first person account of the Ness dig and other archaeological knowledge gleaned during his time in Scotland. To read an excerpt from the *Dig Diary*.

[kingscountymuseum.ca/
the-ness-of-brodgar-dig-diary/](http://kingscountymuseum.ca/the-ness-of-brodgar-dig-diary/)

VISIT OUR CHRISTMAS PARLOUR IN ALL ITS
FINERY
NOVEMBER 22—DECEMBER 9



We were so very honoured to be gifted a complete set (5 volumes) of the newly published **Beech Hill Roots**. This genealogy series traces over 15,000 descendants of William and Elizabeth Ward of Yorkshire, England. William and Elizabeth arrived in Halifax in 1774 with their 18-month-old son Moses. They settled south of Kentville in an area then called Beech Hill and had 12 children. In 1942, Beech Hill was renamed North Alton. The series is 2,776 pages long, and includes 500-page index, maps and photos. Our set is now nestled comfortably in our library. Complete sets of **Beech Hill Roots** are now available at Noggins Corner Farm Market in Greenwich.



BEECH HILL ROOTS |
BISHOP FAMILY ASSOCIATION
10009 Highway 1, Greenwich, NS B4P 2R2

The Bishop Family Association
announce the publication of
BEECH HILL ROOTS
William & Elizabeth Ward
& their descendants
1774 Yorkshire Immigrants

- 5 Volume set -
- 2776 pages
- 15,335 direct descendants in 11 generations

New research reveals Elizabeth's real name, not Grant as commonly assumed




VOLUNTEER'S CORNER



Volunteer Rick Gilbert carves pumpkins for Kentville's annual
Miners Marsh Pumpkin Walk



Bill Naylor works his usual magic!

Miners Marsh Exhibit

Exhibit co-curator Jenifer Gerrits.

Archives

Genealogy Dept.



Sandi Stewart, Museum Advisory Assistant with the Association of Nova Scotia Museums, sharing some digital tips with new volunteer Winston Upshall.



Lucy Traves and Nathan Spinney explore family roots.



MEMORY LANE



Our Historical Society Members have shared many fond memories together. We found this gem when looking through photographs at the museum.



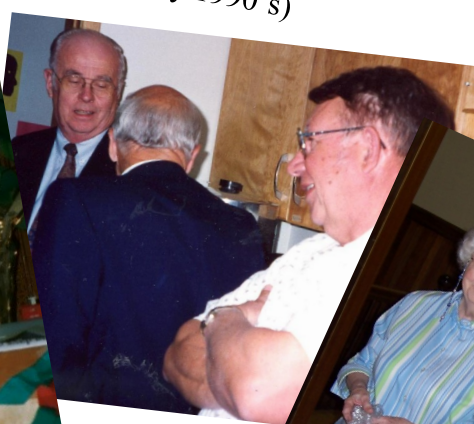
Front row (seated) left to right: Elsie Lane, Anne-Marie Belliveau, Doris Illsley, Liz Stokesbury

Back Row (standing) left to right: Erna and Bev Sawler, Jo Peill, Elsbeth MacKenzie, Dorothy Robbins, Glenda Bishop

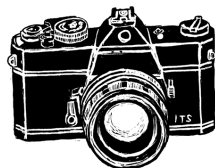


Elise Lane greeting visitors at our Annual Yuletide Tea (early 2000's).

Ron Illsley, Clint MacInnes, and Bud Atkinson helping out at a fundraiser at the Roman Catholic Church in Kentville (early 1990's)



Elsie Lane and Pauline Worthylake preparing sweets for one of our volunteer recognition events



IDEAS FOR GIFTS AT THE KINGS COUNTY MUSEUM GENERAL STORE!



Introducing the Francesco Rubinato collection, new to the Kings County Museum.

This collection includes a selection of high end quills, inks, and calligraphy accessories. Beautiful as gifts or as a treat for yourself. Prices range from \$88 to \$100.

All items located at the Kings County Museum.

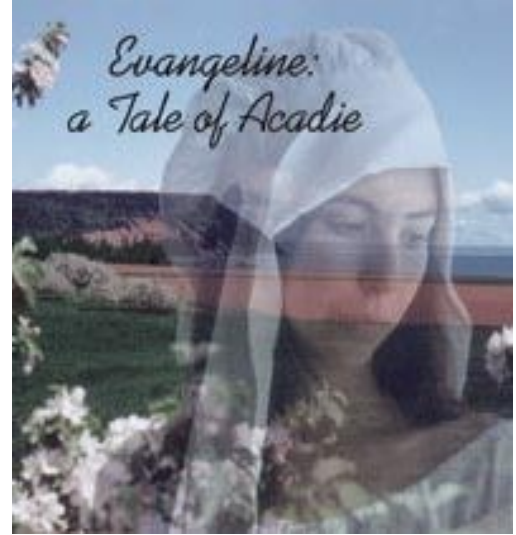


www.rubinato.it

By the Sea

THE GORDON HANSFORD COLLECTION

Introducing the Gordon Hansford Collection, exclusive to the Kings County Museum. This collection includes a variety of hand painted shells by local artist Gordon Hansford.



BUILDING FOR JUSTICE

The Historic Courthouses of the Maritimes



James W. Macnutt, Q.C.

In this beautifully illustrated volume, James W. Macnutt, Q.C. has succeeded in compelling us to look at courthouses in a different way. *Building for Justice* is a celebration of a monumental architecture that, along with the buildings of church and state, forms one of the cornerstones of our society.



The Kings County Museum is featured in a two page spread!



The Story of the Montague
A Historical Documentary
Kings County's First Planter Era Shipwreck
1760 Canard River



A unique and fascinating story of our historical past shot on location in Nova Scotia. The film chronicles the continuing search for this 250 year old wreck. Will the mystery of the Montague be discovered?



The Story of the Montague Kings Historical Society

Kings Historical Society

Be transported back in time through re-enactments of wrecked sailors slogging through the Minas Mud, and a riveting courtroom sequence filmed at Ross Farm. Join the documentary's narrator, Kelly Bourassa as he searches the banks of the Canard River for evidence of the 1760 wreck of the brigantine

The Montague.



IDEAS FOR GIFTS AT THE KINGS COUNTY MUSEUM GENERAL STORE!

For a complete inventory of our Gift Shop Books and Discs

<http://kingscountymuseum.ca/shop/>

We also take orders and send gifts by mail



Books, DVDs and CDs may be ordered on line

<http://kingscountymuseum.ca/shop/> by E-mail

info@kingscountymuseum.ca by phone,

(902) 678-6237.

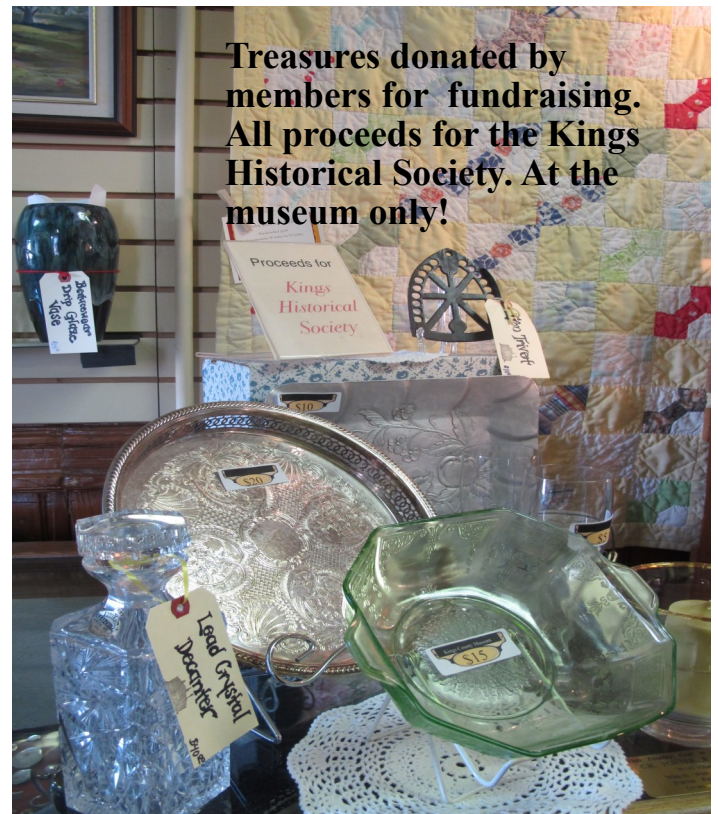
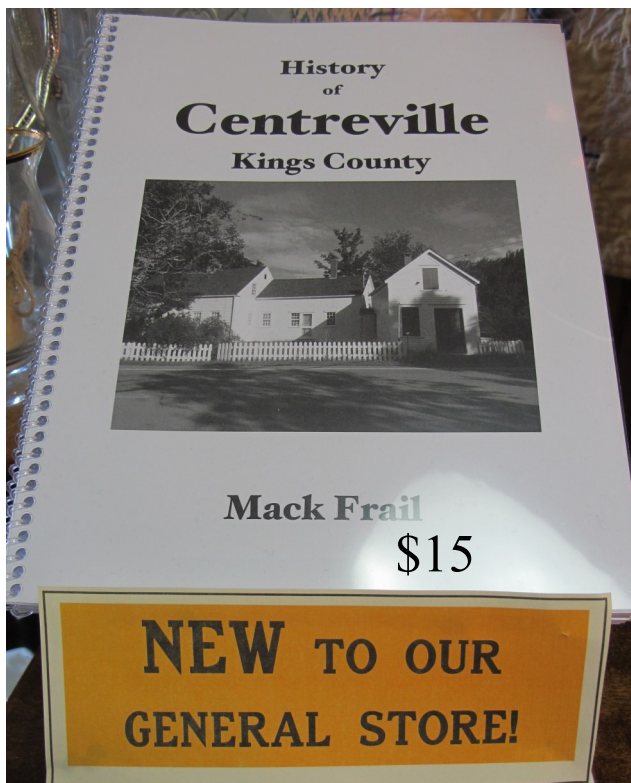
Payment can be made by cash, cheque, money order, Master Card and Visa.



For the kids! A delightful children's photographic book that highlights plants and animals that are commonly found in Miner's Marsh. Photographs by Sheila Levy and story by Pam Fairn .



Miner's Marsh through the seasons
Gift cards \$3 by Sheila Levy.



Burial Grounds Care Society

“Sacred To The Memory”

Congratulations to The Burial Care Society on their 15th anniversary!

The Burial Grounds Care Society was created on August 27, 2001 Their mandate is locating and reclaiming abandoned and neglected graveyards in Kings County . Through dedication and hard work the society has recovered and restored many Kings County burial grounds. Many of them are documented here:

<http://www.freewebs.com/burialcare>



Above: Chair of the Society, Wayne Baltzer at the celebrations on August 9, 2016



Above: Burial Care Society Vice Chair Carmen Legge with Director, JoAnne Bezanson .



Left: The members of the Burial Grounds Care Society that met to begin the steps to preserve the Horton Poor Farm Cemetery site in Greenwich in August 2001. From left to right; Marshall Rand, Maynard Stevens, Blair Coldwell, Wayne Baltzer and Richard Skinner. The results of this meeting have culminated in the site as it is today.



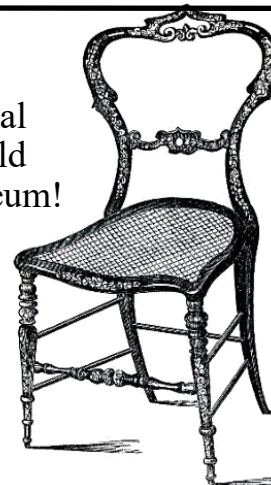
Chair, Wayne Baltzer acknowledging founding member and Director Richard Skinner

Chair Repair

Do you have chairs in need of re-caning? The Kings Historical Society has access to a craftsman who will re-cane your old family heirloom chairs in return for a donation to the museum!

Re-caning can be done at any time. If the chairs require refinishing, that work will only be done in warmer weather.

902-678-6237





**Fly
right
in!**

September to December 3 (draw date)

Birdhouse Auction

To benefit the Kings Historical Society

Birdhouses on view at the Kings County Museum

37 Cornwallis Street, Kentville



Ticket Auction

Tickets \$2 each

OR 6 for \$10

 kingscountymuseum.ca

 **902-678-6237**

 **37 Cornwallis St. Kentville**

 info@kingscountymuseum.ca

 [/kingscountymuseum](https://www.facebook.com/kingscountymuseum)

 [kingscomuseum](https://twitter.com/kingscomuseum)

Kings Historical Society Donations 2016

We sincerely thank the following people for their kind donations in support of the Kings Historical Society and the Kings County Museum.

Donations * Anne Ward * Carolyn Nicholson * Ruth Butler * Julian Gwyn * Lana Ashby * Gregory Harris to C&FH* Doris Gates * Joe-anne Doplesteyne * Jean Sherbeck * Ted Harder * Ron Lewsey * Alison and Scott Butler * William D. Rouse * Gregory Harris * Doris Gates * John Lockhart * Dale and Anne Ward * Floyd and Gwen Peterson (by way of Bill Naylor -chair caning). Dance Time in Port Williams (by way of Soldiers Social dance lessons) * Robert Mitchell *

In Memory * Bria and Liz Stokesbury—in memory of Erna and Bev Sawler * Bill and Bernice Naylor—in memory of Bev & Erna Sawler and Jan Takach * Gary Pittman in memory of Bev Sawler * Lewis Sawler in memory of Bev Sawler * Gerorgina Mahar Carling in memory of Bev Sawler * Doris Illsley in memory of Weldon (Bud) Atkinson * Bris Stokesbuty in memory of Pauline Worthylake * Bria Stokesbury in memory of Weldon (Bud) Atkinson * Nelson Labor in memory of Bev Sawler *

Miners Marsh Exhibit * Adeline MacInnes in memory of Clinton MacInnes

Gift in Kind * Jennie and Allen Sheito * Helen and Gordon Hansford * LJKR Balsom Fir Christmas Tree * Larry Keddy * Ruth Butler * Foster's Fire and Safety * Larry Keddy * Kevin and Cindy Coffin * Bernice and Bill Naylor *

Soldiers Social Fundraiser * Maynard and Mary Stevens * Kentville Toyota * Dave and Melissa Ritcey *

Planned Giving *Helen and Gordon Hansford *

Special Corporate Donation s- * The Ritcey Team * by way of the Ed Coleman Fishing Book

Thank you to all who contributed .

Sponsorship Program 2016

Bronze Sponsorship * John Franey * Paddy's Pub * Lucy Traves * Liz Stokesbury,* Barb Smith,* Eric Cox * Chas and Rita Sweet * Doreen Roberts * Waterbury Newton * MCT Insurance

Silver Sponsorship * Bill and Bernice Naylor * Barb Smith * R.D. Chisholm * Alice Newcombe * Judy and Bob Parks *Eric Cox,* Weldon Atkinson *Judith Parks *

Gold Sponsorship * * Dorothy Robbins * Doris Illsley * Bev and Erna Sawler * Barbara and Philip Thorpe * Cyril and Penny White * Bernice and Bil Naylor * Paul and Judith Bushnell *

Platinum Sponsorship * Fred Houghton * Tartan Foundation * Helen and Gordon Hansford * Annette MacKenzie * Interchurch Housing Society

Please consider becoming a sponsor in our 2017-2018 season



Kings Historical Society

Leave a Legacy



We invite you to consider helping to preserve the heritage of Kings County through the planned giving of
Cash gifts, Bequests Gifts of Property, Gifts of Public Securities
Life Insurance

There are major tax savings to be gained using any of the above.
If you are interested in taking advantage of these options please speak to your estate planner advisor.

Importance of Sponsorship Program

Please consider donating to our 2017 campaign.

In 2004 we launched our Sponsorship Program. Sponsorship donations contribute to our heating, utilities, cleaning and maintenance supplies, exhibits and preservation of collections. We wish to thank all the Kings Historical Society members and friends who continue to help by donating to our Sponsorship Program, and encourage others to participate. For more information see our web page at www.kingscountymuseum.ca and click on "Sponsor".

MEMBERSHIP

\$20.00 per person
\$25.00 per family
\$25.00 per organization
\$15.00 per Student with ID
Membership is based on the Calendar year
Make cheque payable to
Kings Historical Society
37 Cornwallis Street
Kentville, Nova Scotia
B4N 2E2

MEMORIAL DONATIONS

In Memoriam donations may be made to the Kings Historical Society in memory of your loved one.

This is a continuing way to honour friends or relatives, and provides much needed assistance to the Kings County Museum.

* Charitable Tax Receipts are available for all donations.

KINGS HISTORICAL SOCIETY KINGS COUNTY MUSEUM

37 Cornwallis Street
Kentville, N.S. B4N 2E2
Phone: 902-678-6237
Fax: 902-678-2764

e-mail info@kingscountymuseum.ca
Web Page www.kingscountymuseum.ca
Genealogy
genealogy@kingscountymuseum.ca
Facebook [kingscountymuseum](https://www.facebook.com/kingscountymuseum)